

Community Guide

A GUIDE TO PLANNING YOUR
NATIONAL TREE DAY

National
Tree Day
PLANET ARK

30
YEARS



Contents



About	_____	3
Why get involved	____	4
Getting started	_____	5
Resources	_____	8
Appendix	_____	9



Acknowledgement of Country

Planet Ark acknowledges the Traditional Owners of the places in which we live, work and plant. We recognise the enduring relationships they have with their lands and waters, and we pay our respects to Elders past, present and emerging.



About National Tree Day

GETTING OUR HANDS DIRTY SINCE 1996

Established by Planet Ark in 1996, National Tree Day has grown into Australia's largest community tree planting and nature care initiative.

Each year, thousands of volunteers across the country give their time to make a positive impact on the environment and their local communities. To date, more than **5 million volunteers** have planted over **28 million native trees, shrubs, and grasses** - and the impact continues to grow every year!

While every or any day can be Tree Day, Schools Tree Day and National Tree Day are typically held on the last Friday and Sunday of July, respectively. In northern parts of Australia, Tropical Tree Day is celebrated on the first Sunday in December to align with the optimal planting season.

National Tree Day is an opportunity to strengthen community connections, support local biodiversity, and encourage environmental stewardship - all while creating a fun, inclusive and hands-on experience for participants of all ages.



HELP US REACH 30 MILLION TREES

2026 marks 30 years of National Tree Day. In that time, passionate volunteers have helped plant over 28 million trees, shrubs and grasses across Australia.

Help us reach 30 million trees planted, to mark 30 years of National Tree Day!

Be a part of the milestone:

[REGISTER NOW](#)



Why get involved

- Connect with nature and your community
- Support native wildlife and enhance local habitats
- Be part of positive environmental and community action
- Learn about your local environment and help protect it for future generations



HOW TO GET INVOLVED



VOLUNTEER

Join the tens of thousands of Australians getting their hands dirty to restore and regenerate local habitats on National Tree Day. Find a public planting site near you and be part of the action. See the steps below to learn how.



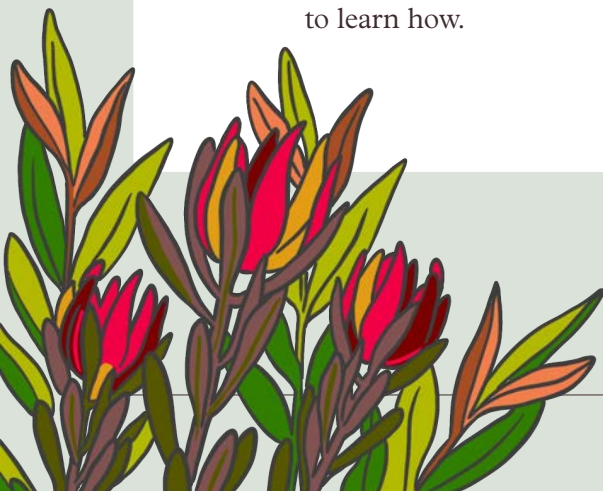
HOST A SITE

Become a Site Coordinator and run your own National Tree Day event, bringing your community together to care for and protect your local environment. Site Coordinators organise and host the event. See the steps below for more information.



DONATE

If you can't make it to a planting event near you, consider donating to or fundraising for The Seedling Bank. This grants program helps schools and community groups cover the cost of seedlings, getting more plants in the ground across the country.





Getting started

AS A VOLUNTEER

STEP 1: FIND A SITE

Enter your postcode on the interactive [Find a Site map](#) on the National Tree Day website to find a public planting event in your local area.

STEP 2: REGISTER AS A VOLUNTEER

Fill out the volunteer registration form on the site you'd like to attend so that the site coordinator knows you'll be there and can keep track of numbers.

STEP 3: ATTEND THE EVENT

Enjoy getting your hands dirty and taking part in Australia's biggest planting and nature care event. Remember to Capture the day and share photos/videos with our National Tree Day community, tagging [@nationaltreeday](#) or [@planetark](#) on Instagram and Facebook [#nationaltreeday](#) [#connectwithnature](#).



ACTIVITIES FOR CHILDREN

If you have kids, continue encouraging them to connect with nature by downloading our free activity books/sheets:

- Nature scavenger hunt
- Leaf painting activity
- 'Be a leaf detective'
- Make a gratitude tree
- Colouring pages
- And more!

[DOWNLOAD HERE](#)



GETTING STARTED AS A SITE COORDINATOR

STEP 1: CHOOSE A SITE

Find a suitable planting site in your community for your event. You must determine who owns the site, if that's not you, seek permission from the local council or private landholder to plant there. Things to consider when choosing a site:

- Are there any local areas that would benefit from a bit of love and restoration?
- Is there the opportunity to create or expand green or wildlife corridors?
- Is the site safe and accessible for volunteers?
- How many plants and volunteers does the site have capacity for?
- Who will provide ongoing care and maintenance for your site?
- Does the site have an accessible water source for post-planting watering?

You don't have to be planting trees to get involved, we encourage groups who are working on bush regeneration, weeding, coastal and dune care, and any other nature preservation activity to register for National Tree Day.

STEP 2: REGISTER YOUR EVENT

- Log in to the [Coordinator Hub](#) on the National Tree Day website to [register your event](#). New coordinators will have to register themselves first.
- Registered **public events** are visible on our 'find a site' map, allowing community members to find your event and register as volunteers. If your event is just for your friends, family, or community group, select **private event**.
- Registration is necessary for your volunteers to be covered by our insurance. Registered events also ensure that your volunteer and planting numbers are included in our national tally.

STEP 3: PROMOTE YOUR EVENT

If you are hosting a private event, simply send an invite out to your group to let them know the details of your event.

For public events:

- Promote your planting on social media
- Put a notice up on your community group's website and in your newsletters.
- Inform your council - they may help with community promotion.
- Engage local newspapers or media to advertise or run a story on your event.
- You can find ready-to-use social media tiles, and editable posters, and other promotional materials in the [Coordinator's Toolkit](#) on our website.
- Please see the Appendix on page 9 to find links to our National Tree Day logo files and guidelines for correct use.



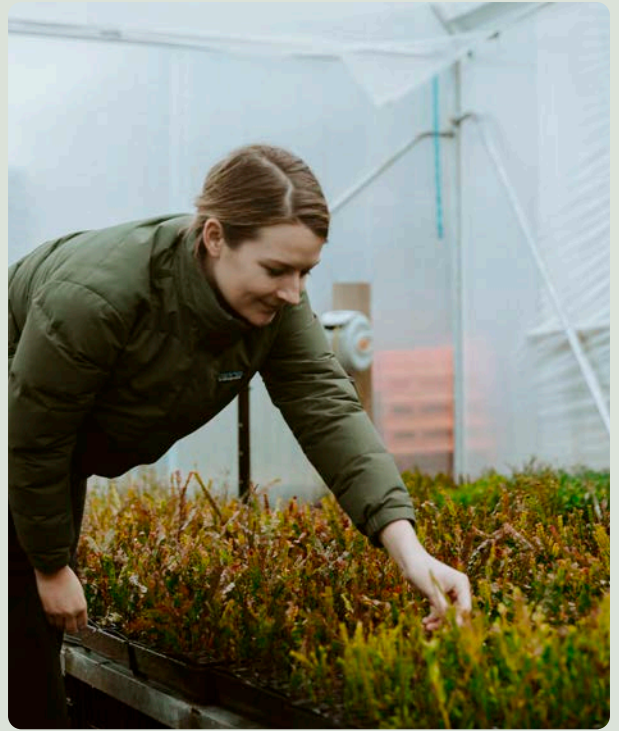
PLEASE NOTE

Registration is necessary for your volunteers to be covered by our insurance.



STEP 4: PREPARE FOR YOUR EVENT

- Source plants, tree guards, tools, and other resources for your event with enough lead time. Please note that Planet Ark does not supply plants or resources. Please see the resources section on the next page for more information.
- Organise a first aid kit and if possible, a qualified first aider for the day.
- Organise rubbish and recycling bins to keep your site clean.
- Organise event signage so people know where to go.
- Print Digital Sign-In posters, Manual Registration forms and Accident/ Incident forms. All forms can be found on our [Coordinator Hub](#).
- In the days leading up to your event, send a reminder email to volunteers about what to bring, where to meet, and any other important information.



STEP 5: RUN YOUR EVENT

- All volunteers are required to complete the Digital Sign-In form before planting, regardless of prior online volunteer registration. This lets us and you know who came on the day, and ensures all participants are covered by Planet Ark's insurance.
- Capture the day and share with our National Tree Day community, tagging @nationaltreeday or @planetark on Instagram and Facebook #nationaltreeday #connectwithnature. Remember to take some before and after shots to reflect on in years to come.
- Most importantly, have fun!



ADD EXTRA IMPACT TO YOUR PLANTING

Turn your event into a fundraiser by displaying one of our posters for The Seedling Bank (our grants initiative for National Tree Day). Attendees simply scan the QR code to make a donation, and know that their gift will help get even more trees into the ground!

STEP 6: LOG YOUR RESULTS

Log in to the [Coordinator Hub](#) and log your results to let us know how many volunteers attended on the day and the number of trees, shrubs, and grasses you planted. This ensures your efforts are accurately counted in our national tally.





Resources

PLANTS

Planet Ark does not supply plants for community plantings. Schools and community groups are eligible to [apply for a Seedling Bank grant](#), when grant rounds are available.

Your local council, Landcare group or community nursery may be able to help by supplying native seedlings or plants for free or at a discounted price. Some may even be able to provide tools for the day or help with site preparation and maintenance.

OTHER RESOURCES

Collaborate with other community groups such as your local Men's Shed, Lions Club, RSL, community action group, or school P&C to help run the day or to put on a BBQ or bake sale to fuel your volunteers.

Reach out to local businesses who may be able to assist with funding your event, providing tools and equipment, catering, or help on the day.

PLANTING RECOMMENDATIONS

For region-specific native planting recommendations, check out our [Native Species Guide](#). It provides a snapshot of the many wonderful native plants available for planting in your backyard or balcony. We have selected some widespread native plants, which should be easy to source and able to grow in a range of environmental conditions. For more targeted guidance, we suggest contacting your local native nursery or council.



←
*Download our
free Native
Species Guide*



Appendix

ASSETS & RESOURCES

OUR LOGO - VARIATIONS

The standard/default logo shown below is the preferred logo for all applications.



Standard/default logo

We have simplified light/dark variations of our logo for use on light/dark or busy backgrounds.



Light logo



Dark logo

Our logomark is only to be used when the National Tree Day name is shown elsewhere on an asset, or as a watermark on assets.



Colour logomark



Dark logomark



Light logomark

ACCESS OUR LOGO PACK

To receive all versions of the National Tree Day logo, simply login to the [Coordinator's Toolkit](#) and download a logo pack.

Files are provided in PNG (for digital use) and SVG (for print use).

LOGO PACK

Community groups are free to use the National Tree Day logo in their communications. However, we ask that you please adhere to our **usage guidelines** on the next page.



OUR LOGO - USAGE GUIDELINES

Please maintain clear space (equivalent to the width and height of the 'n' in the logo)



Thank you for adhering to the National Tree Day logo guidelines. By doing so you help maintain the integrity of our brand.

Please do not distort, recolour, rearrange or tilt our logo.



Do not distort



Do not recolour

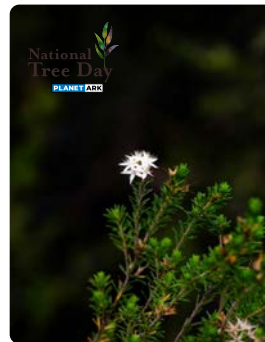


Do not tilt



Do not rearrange logo elements

Please do not use the standard logo on dark/busy photos where it cannot be seen properly.



Do not use the standard logo on dark/busy images or backgrounds



Use the light version of our logo on dark/busy images or backgrounds



NATIONAL TREE DAY TOOLKIT

Visit the [Toolkit](#) on the National Tree Day website to access:

- Social media tiles
- Posters (A4 and A3 size)
- Activity books for children
- Activity sheets for children
- Extra guides for home plantings, schools, communities and businesses

Once you have registered your site, login to the [Coordinator Hub](#) to access:

- Participation certificates (A5)
- Volunteer registration form
- Working with Children Guidelines
- Accident/Incident Guidelines
- Risk assessment template
- Results form (to log your planting figures with us)



“

The best time to plant a tree was 30 years ago. The second best time is today.

- CHINESE PROVERB

