



# NATIONAL TREE DAY

## Activity Book

---

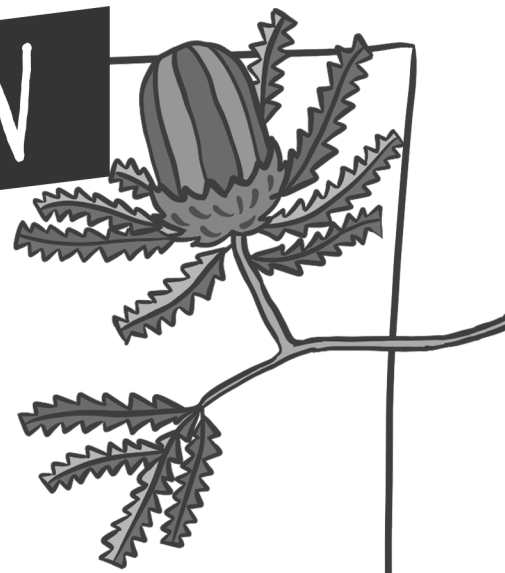
FOR EARLY  
LEARNERS

---

national  
tree day

PLANET ARK  TOYOTA

# INTRODUCTION



## Nature is an endless source of wonder and joy

Trees are like nature's superheroes – they not only soak up carbon dioxide but also create homes for our winged and furry pals.

Picture this: a world where each tree planted is a step closer to a brighter tomorrow. How do we get there? By lending Mother Nature a helping hand and planting some trees, of course!

National Tree Day is brought to life by Planet Ark. It's a heartfelt gathering, where neighbours become friends and communities unite for a common cause. Taking place on the last weekend of July each year, we celebrate the beauty of nature and take pride in nurturing our local environments. And hey, don't forget about Schools Tree Day – a chance for students to dive into the joys of planting while making lasting memories with classmates.

---

### Note to parents, carers and educators

In this activity book you'll find a few activities kids can do on their own, and a few activities that you can do together/in a group. Little hands may need help cutting things out, gathering materials and following instructions – we've made everything as clear and simple as possible to reduce the effort you need to make!



**Let's team up with students all over Australia and be the guardians of tomorrow's world!** Join us and thousands of fellow Australians on National Tree Day. Visit our website to find out more and let's make magic happen, one tree at a time.

[treeday.planetark.org](http://treeday.planetark.org)

# NATURE SCAVENGER HUNT

Go for a walk in nature and see how many things you can tick off from this list.



Some water

☐


A seed or seed pod

☐


A spotty rock

☐


A flower

☐

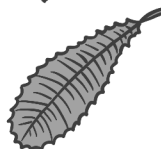

A feather

☐


A funny looking stick

☐


An insect or bug

☐


A brown leaf

☐

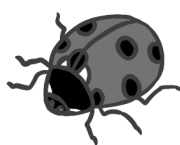

A bird

☐


A hole in the ground

☐


A leaf with a hole in it

☐


Something red

☐


A spiderweb

☐


A tall tree

☐


Something yellow

☐


Something circle-shaped

☐


Animal footprints

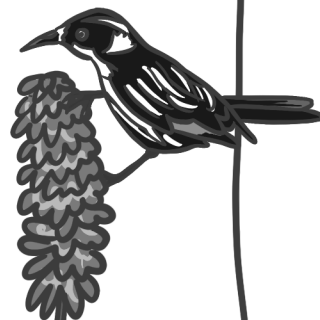
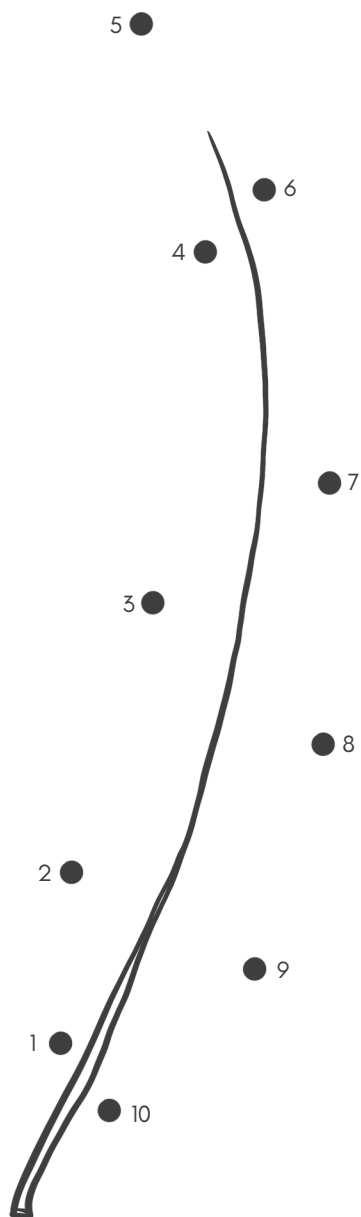
☐


Something soft

☐

# DOT TO DOT

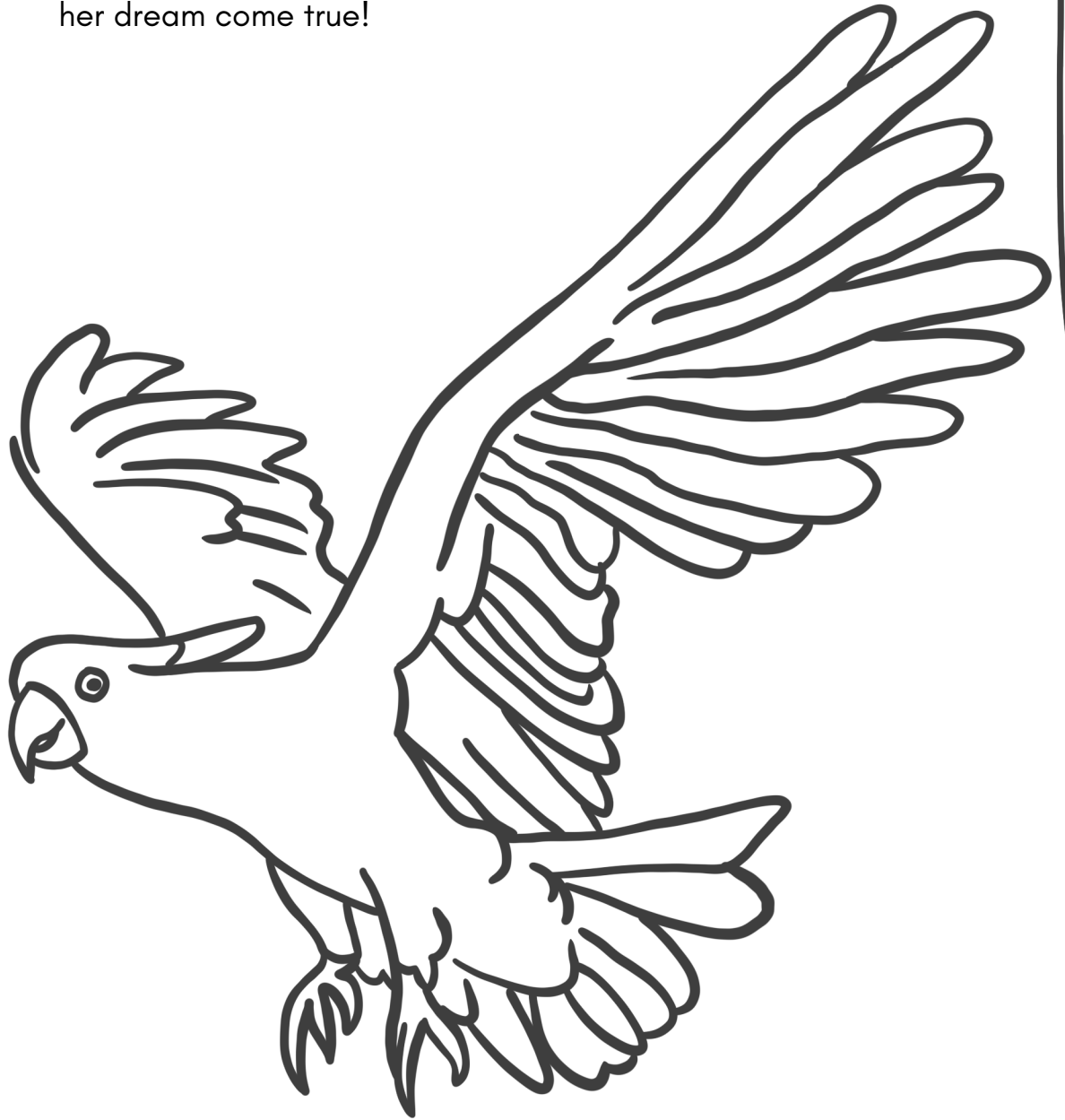
Connect the dots and then colour in the drawing you have created!



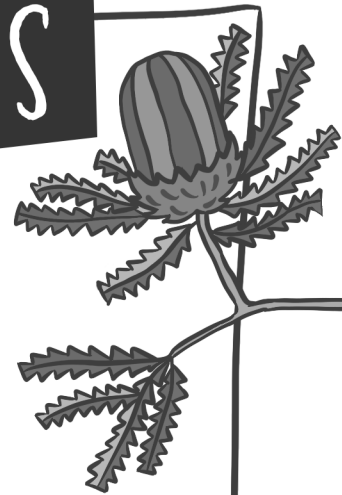


# COLOURING IN

This sulphur-crested cockatoo wants to stand out and be as colourful as possible. Colour her in and make her dream come true!



# PAINTED LEAF PRINTS



**To create painted leaf prints you will need:**

- Plain paper
- Selection of leaves (preferably ones that have already fallen off!)
- Paints
- Paintbrushes



## STEP 1

Gather your leaves – try to find a variety of shapes and sizes.

## STEP 2

Paint one leaf. You can use a single colour or a few different ones!

## STEP 3

While the paint is still wet on your leaf, press it onto the paper. Try not to jiggle it too much while pressing.

## STEP 4

Repeat steps 1-3 to fill your page!

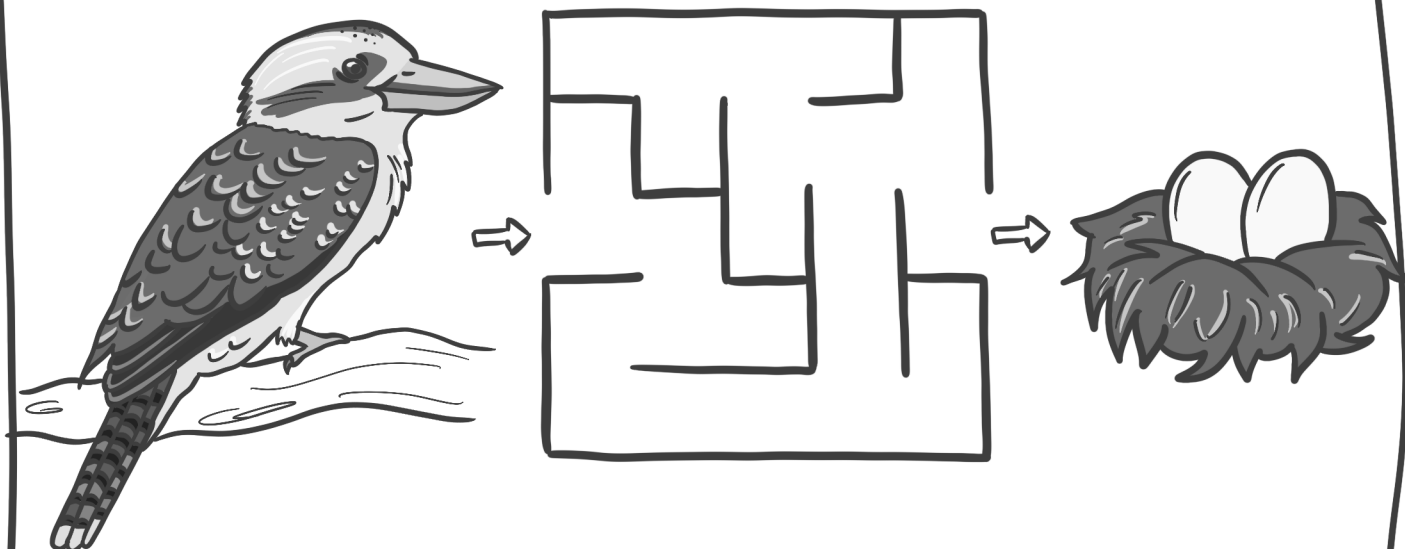


**Try using coloured paper behind your leaves to create an even more unique look. For the ultra-adventurous, you could even make a leaf mandala pattern!**



# MAZE

Help the mummy kookaburra find her eggs!



DID YOU  
KNOW?

The name 'kookaburra' comes from the Wiradjuri (First Australian) name 'guuguubarra', which is the sound the kookaburra/guuguubarra makes!

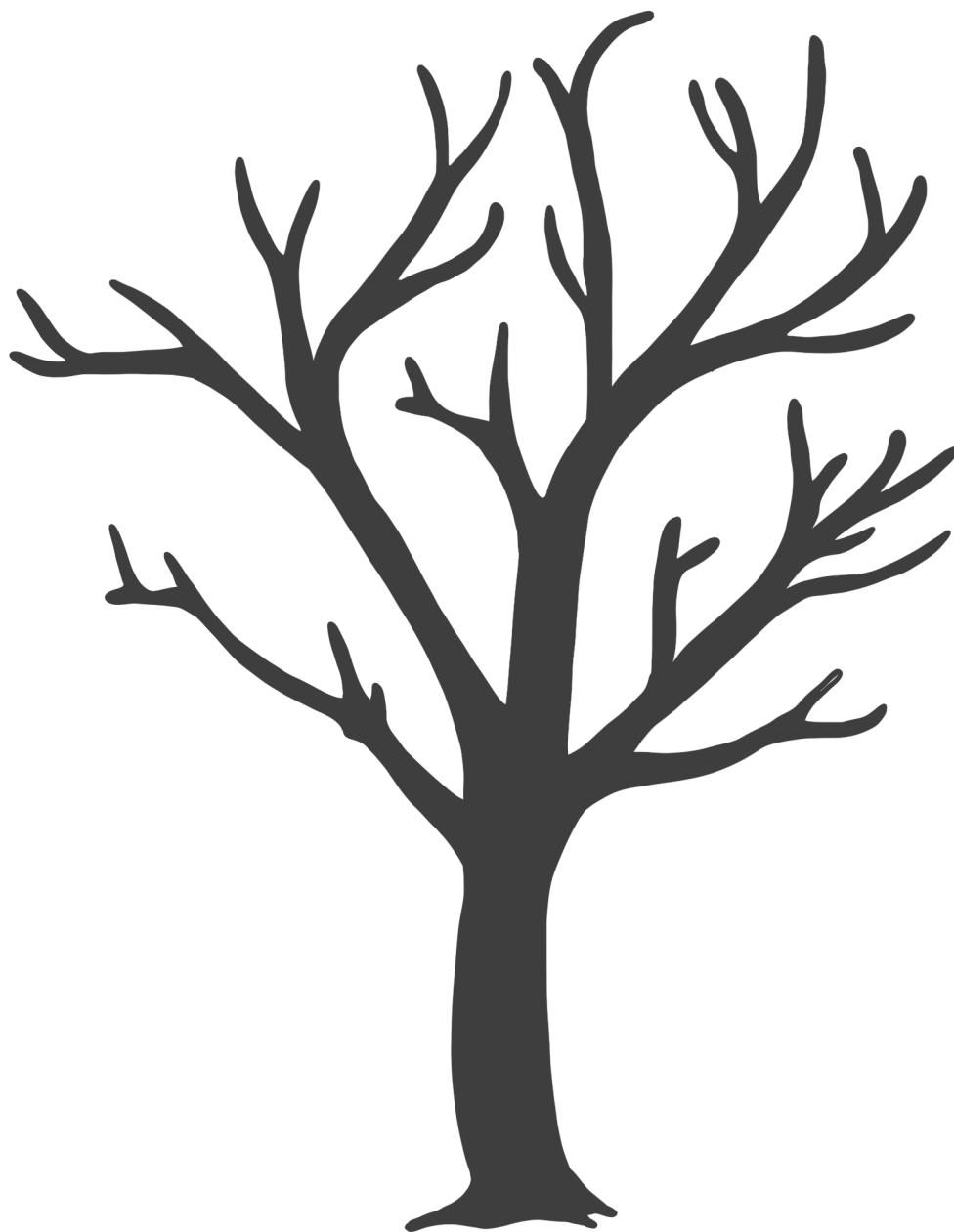
# SPOT THE DIFFERENCE

Can you spot the **4** differences in these pictures?



# FINGERPRINT TREE

Grab some paints, dip in your finger, and give this bare tree some beautiful leaves!



# LEAF & BARK BOATS



## TIPS TO HELP YOUR BOAT SAIL AND PROTECT WILDLIFE

Use bark pieces with the curved edges facing up (to prevent water getting in). Getting your sail to stand up can be fiddly, but avoid using blu-tack, tape or anything else that might be hazardous for wildlife.



**Boats aren't usually empty when they're sailing. Use gumnuts or pebbles to make a captain and/or some passengers for your boat!**

## To create leaf and bark boats you will need:

- Some dry/firm leaves
- Some bark strips
- A few small sticks
- A large tub of water (if you don't have a creek/lake nearby)

### STEP 1

Use your stick to pierce small holes into the top and bottom of a leaf. Then thread the leaf onto the stick to make your sail.

### STEP 2

Pierce a small hole into the middle of the bark using a spare stick. Place your sail into this hole. It may take some trial and error (see tips).

### STEP 3

Find a creek, lake or pond and let your boat set sail! If you have some buddies around, you can race your boats in the water.

# LEAF ANIMALS



## To create leaf animals you will need:

- A collection of fallen leaves (soft leaves will work best for this project) and/or flowers, pine needles or whatever else you like
- Animal stencils (cut them out from the next page, or create your own)
- Glue stick

### STEP 1

Cut out the animal stencils from the next page.

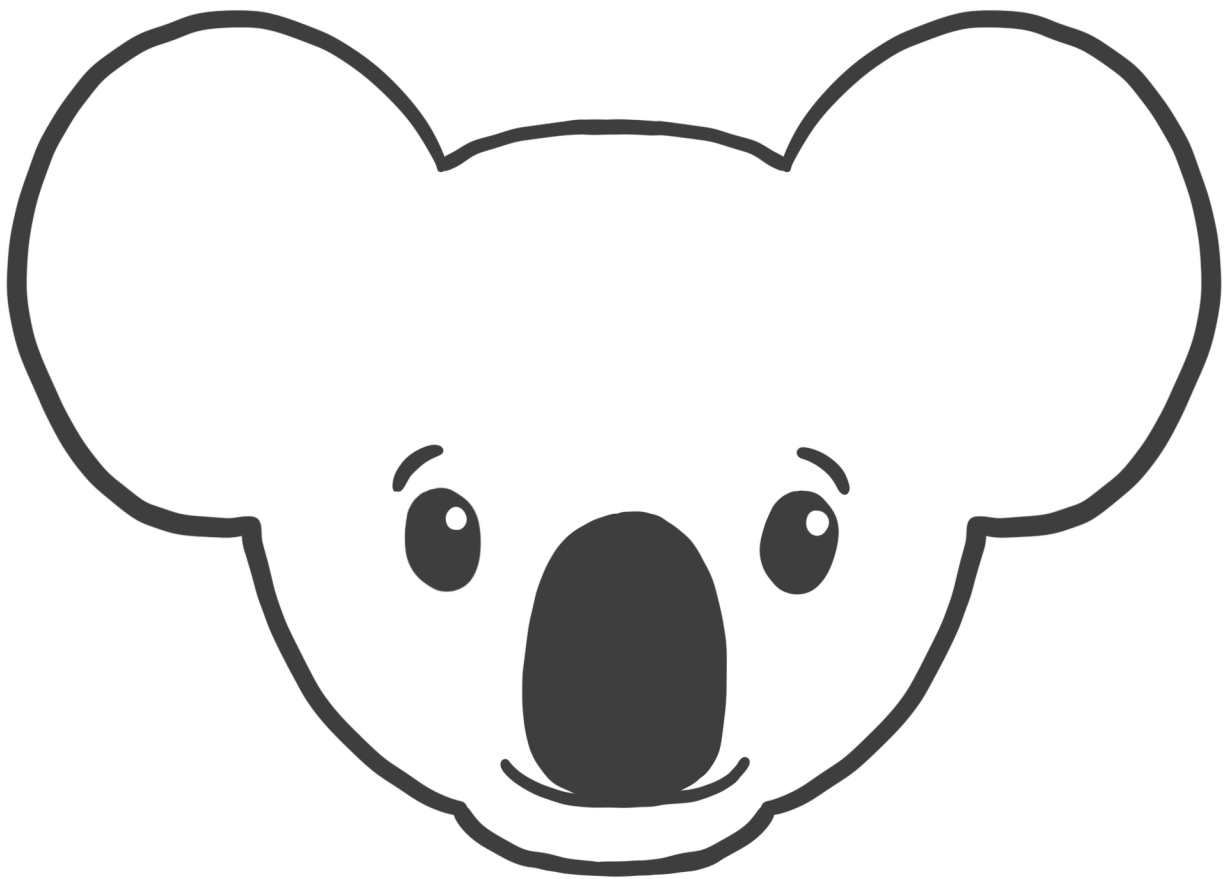
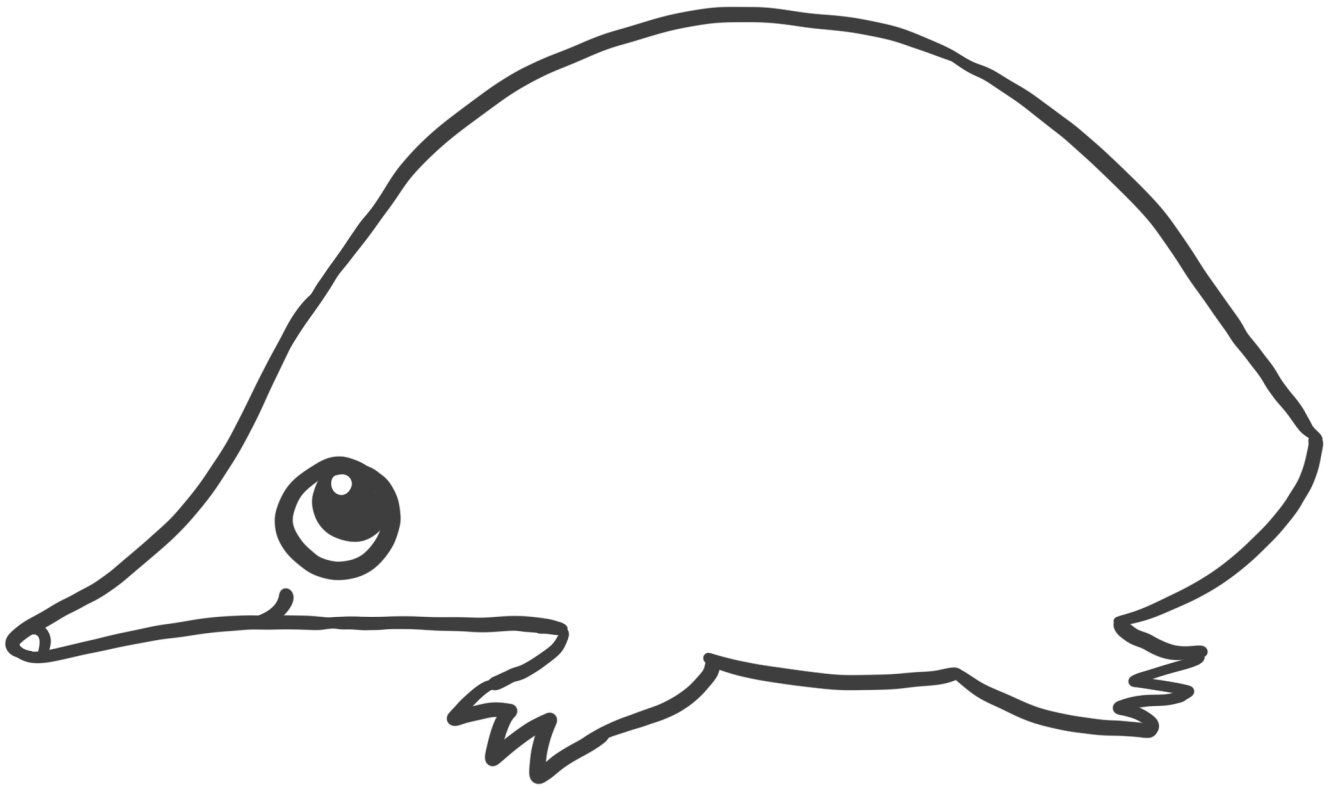
### STEP 2

Using your glue stick, paste your leaves, flowers or nature bits to the stencil (try to avoid the face!).

EXTRA  
FUN

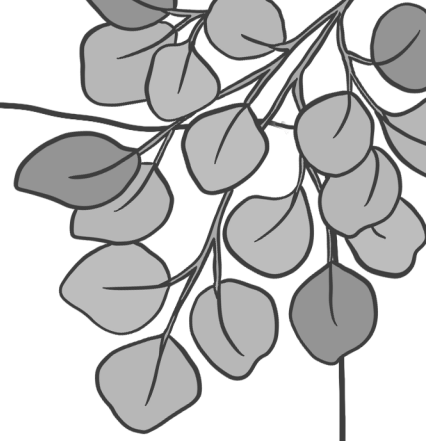
**There's an echidna on the next page  
- you could use pine needles and little  
twigs to make his spines, if you like!**





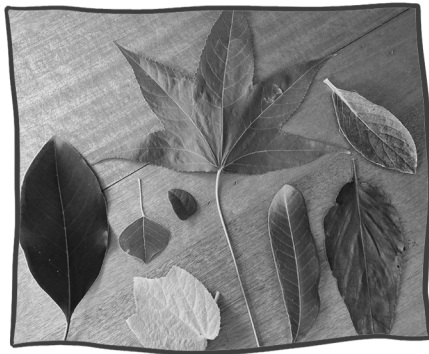


# LEAF RUBBINGS



## To create leaf rubbings you will need:

- Plain paper
- Selection of leaves (preferably ones that have already fallen off!)
- Charcoal or coloured crayons (with the wrapping removed)



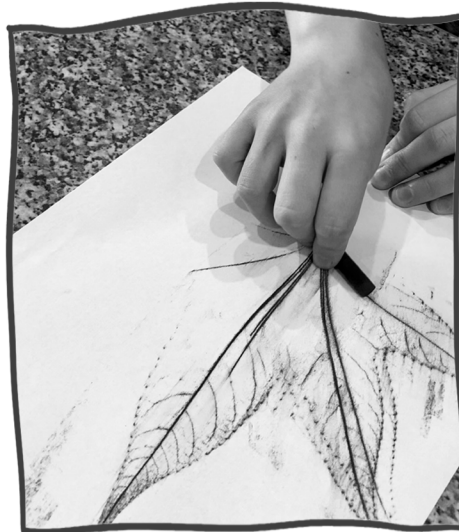
### STEP 1

Gather your leaves – try to find a variety of shapes and sizes.

Leaf patterns are cool!!

### STEP 2

Place a leaf with the veiny side (generally the underside) facing upwards, underneath your piece of paper.



### STEP 3

Pressing down on the stem of your leaf with a finger so it doesn't move, use the long side of your charcoal/crayon to rub over the leaf. For the best effect, use long sweeping motions.

### STEP 4

Repeat with other leaves, experimenting with different colours and layouts, and then turn your creations into whatever you like! (eg. greeting cards, framed art or a hanging leaf mobile for your room.)

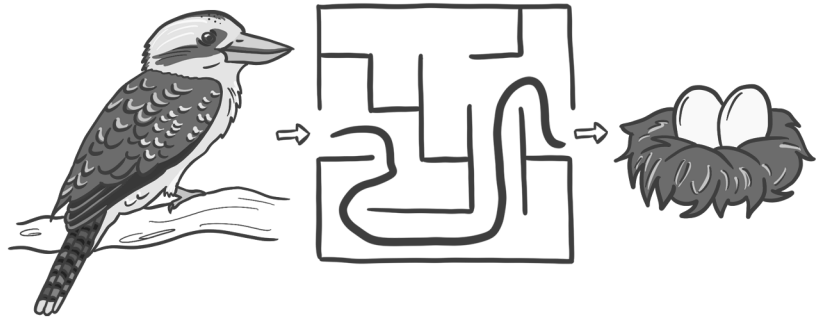
### BONUS EXTRA!

If you have a white crayon, you could create your leaf rubbing with this, and then paint over it with watercolour paints for a special ghostly look!



# SOLUTIONS

## MAZE



## SPOT THE DIFFERENCE





“

The best time to plant  
a tree was 20 years  
ago. **The second best  
time is now.**

Chinese Proverb

**Design and Illustration** by Sarah Wiecek for Planet Ark Environmental Foundation

**Planet Ark Environmental Foundation**

Suite 3.18, Level 3, 22-36 Mountain St, Ultimo NSW 2007

[treeday.planetark.org](http://treeday.planetark.org) | [treeday@planetark.org](mailto:treeday@planetark.org) | 1300 88 5000 | ABN: 26 057 221 959

**national  
tree day**  
**PLANET ARK**  **TOYOTA**